

Maldives Land and Survey Authority,
 MINISTRY OF HOUSING AND INFRASTRUCTURE
 Ameenee Magu, Maafannu, Male', 20392, Maldives.
 Office (PABX): +(960) 3004300, Fax: +(960) 3004254
 Email: survey@housing.gov.mv
 Web: www.surveyofmaldives.gov.mv, www.housing.gov.mv



CONTROLPOINT DETAILS	Station Number	PSM 5627
Coordinate Information		
Geodetic	Grid	
WGS 84	UTM Zone 43	
Lat: 5° 08' 30.3285" N	E:	291142.641
Long: 73° 06' 57.07960" E	N:	568641.863
Ellp Height:	Orth Height:	+1.518
Island Name: B.HIBALHIDHOO	Date:	14 FEBRUARY 2015

Monument description & method of survey:

- Monument Type A as in Technical Brief
- Stainless steel plate fixed to concrete by Four bolts
- Horizontal coordinates fixed by GNSS Static survey.
- Elevation reduced relative to Local MSL by double level run
- PSM 5627 is 50mm above ground Level

General site condition & access:

- Easily accessible area with wide angle of sky visibility
- Located in the vegetation line

Owner: Biznas Maldives Pvt Ltd.



Bottom



North Height 1.6m / Distance 2m



East Height 1.6m / Distance 2m



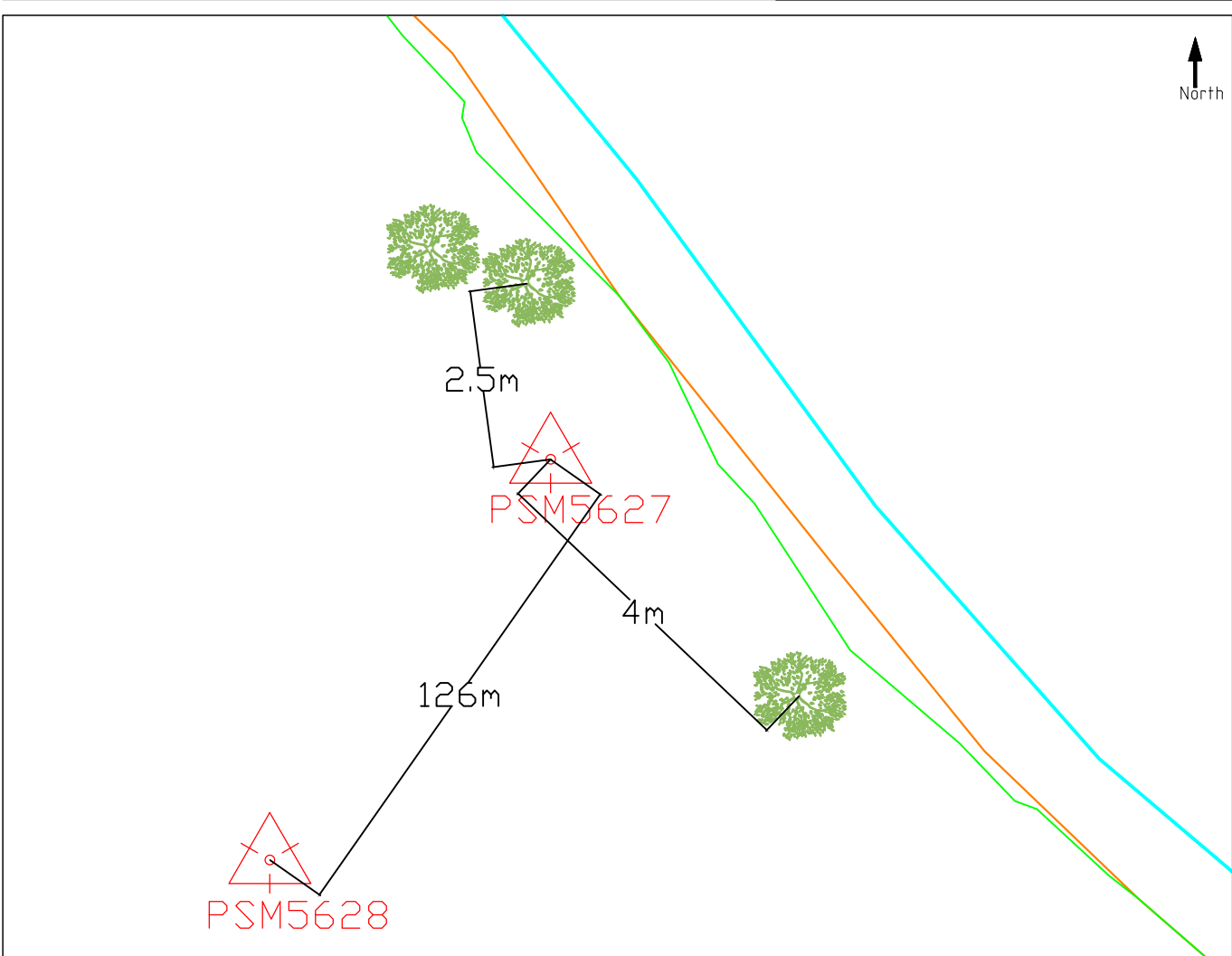
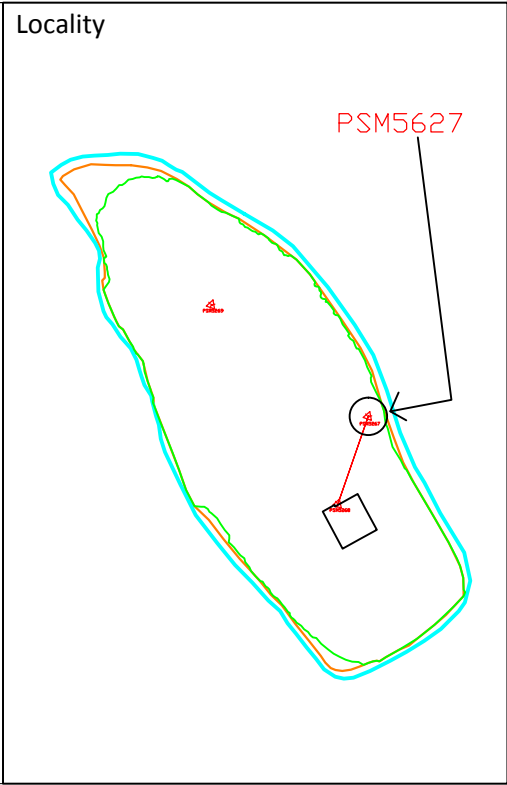
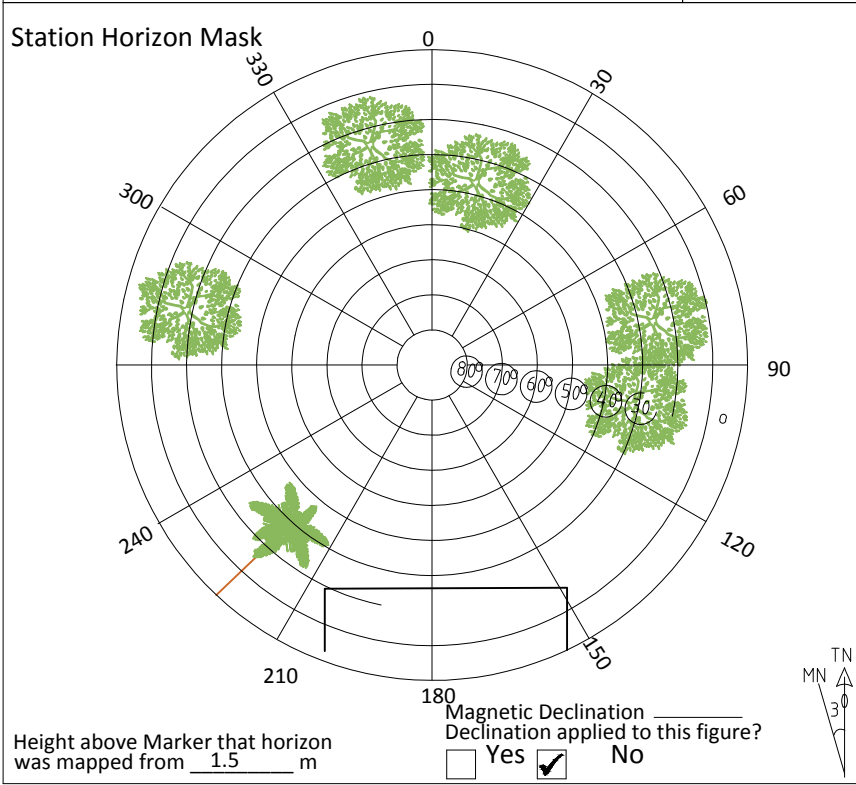
Up Height 1.6m



South Height 1.6m / Distance 2m



West Height 1.6m / Distance 2m



Sketched by: Abulho Scale: Date: 14 FEBRUARY 2015

Maldives Land and Survey Authority,
 MINISTRY OF HOUSING AND INFRASTRUCTURE
 Ameenee Magu, Maafannu, Male', 20392, Maldives.
 Office (PABX): +(960) 3004300, Fax: +(960) 3004254
 Email: survey@housing.gov.mv
 Web: www.surveyofmaldives.gov.mv, www.housing.gov.mv



CONTROLPOINT DETAILS	Station Number	PSM 5628
Coordinate Information		
Geodetic	Grid	
WGS 84	UTM Zone 43	
Lat: 5° 08' 26.20969" N	E:	291141.5808
Long: 73° 06' 57.05730" E	N:	568515.3481
Ellp Height:	Orth Height:	+0.944
Island Name: B.HIBALHIDHOO	Date:	14 FEBRUARY 2015

Monument description & method of survey:

- Monument Type A as in Technical Brief
- Stainless steel plate fixed to concrete by Four bolts
- Horizontal coordinates fixed by GNSS Static survey.
- Elevation reduced relative to Local MSL by double level run
- PSM 5628 is 50mm above ground Level

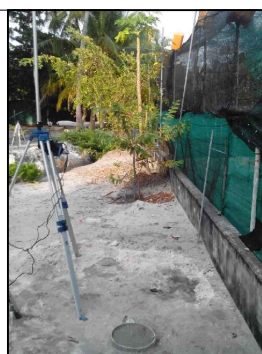
General site condition & access:

- Easily accessible area with wide angle of sky visibility
- Located in the vegetation line

Owner: Biznas Maldives Pvt Ltd.



Bottom



North Height 1.6m / Distance 2m



East Height 1.6m / Distance 2m



Up Height 1.6m



South Height 1.6m / Distance 2m



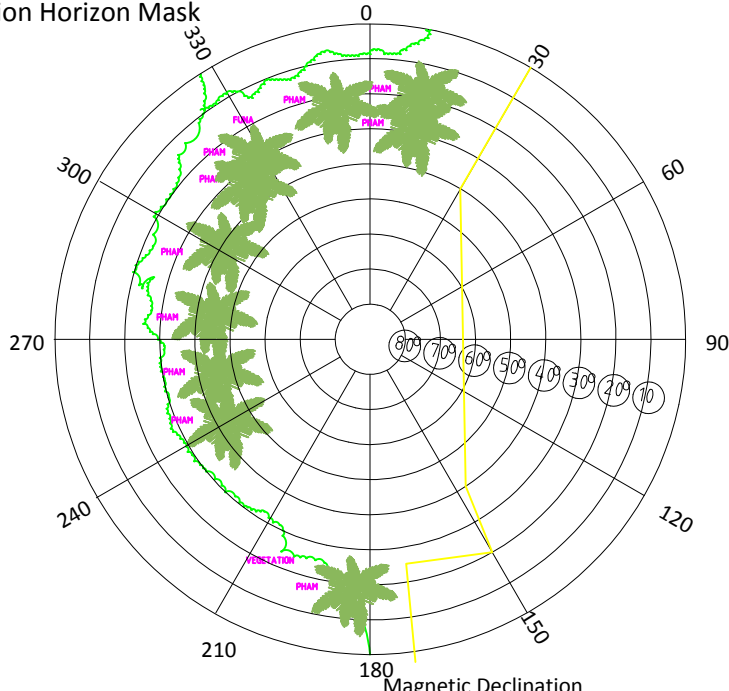
West Height 1.6m / Distance 2m

SITE INFORMATION

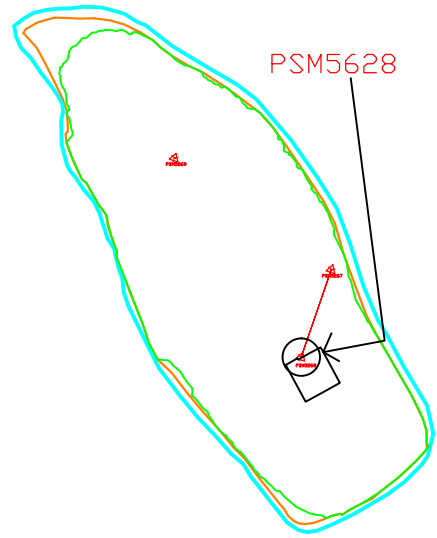
Station Number

P	S	M	5	6	2	8
---	---	---	---	---	---	---

Station Horizon Mask

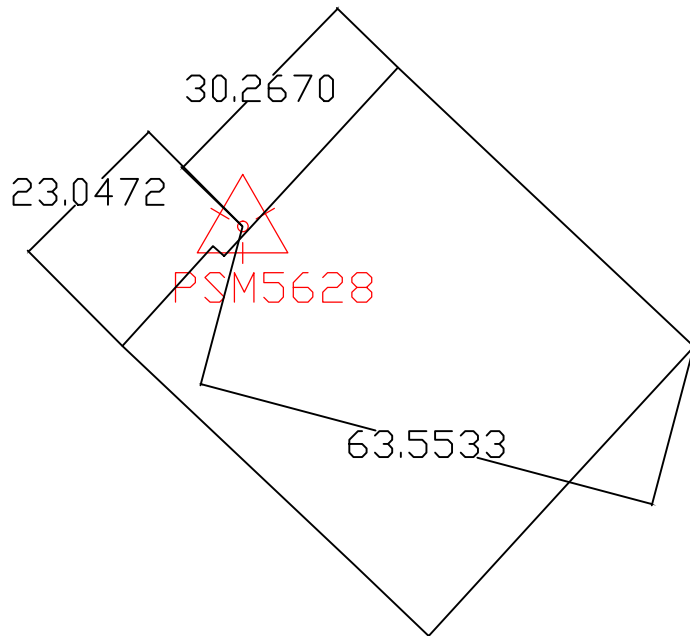


Locality



Height above Marker that horizon was mapped from 1.5 m

Magnetic Declination _____
 Declination applied to this figure?
 Yes No



Sketched by: Abulho

Scale:

Not to Scale

Date: 14 FEBRUARY 2015

Maldives Land and Survey Authority,
 MINISTRY OF HOUSING AND INFRASTRUCTURE
 Ameenee Magu, Maafannu, Male', 20392, Maldives.
 Office (PABX): +(960) 3004300, Fax: +(960) 3004254
 Email: survey@housing.gov.mv
 Web: www.surveyofmaldives.gov.mv, www.housing.gov.mv



CONTROLPOINT DETAILS	Station Number	PSM 5629
Coordinate Information		
Geodetic	Grid	
WGS 84	UTM Zone 43	
Lat: 5° 08' 32.79445" N	E:	290891.0504
Long: 73° 06' 48.90453" E	N:	568718.3841
Ellp Height:	Orth Height: +0.996	
Island Name: B.HIBALHIDHOO	Date: 14 FEBRUARY 2015	

Monument description & method of survey:

- Monument Type A as in Technical Brief
- Stainless steel plate fixed to concrete by Four bolts
- Horizontal coordinates fixed by GNSS Static survey.
- Elevation reduced relative to Local MSL by double level run
- PSM 5629 is 50mm above ground Level

General site condition & access:

- Easily accessible area with wide angle of sky visibility
- Located in the vegetation line

Owner: Biznas Maldives Pvt Ltd.



Bottom



North Height 1.6m / Distance 2m



East Height 1.6m / Distance 2m



Up Height 1.6m



South Height 1.6m / Distance 2m



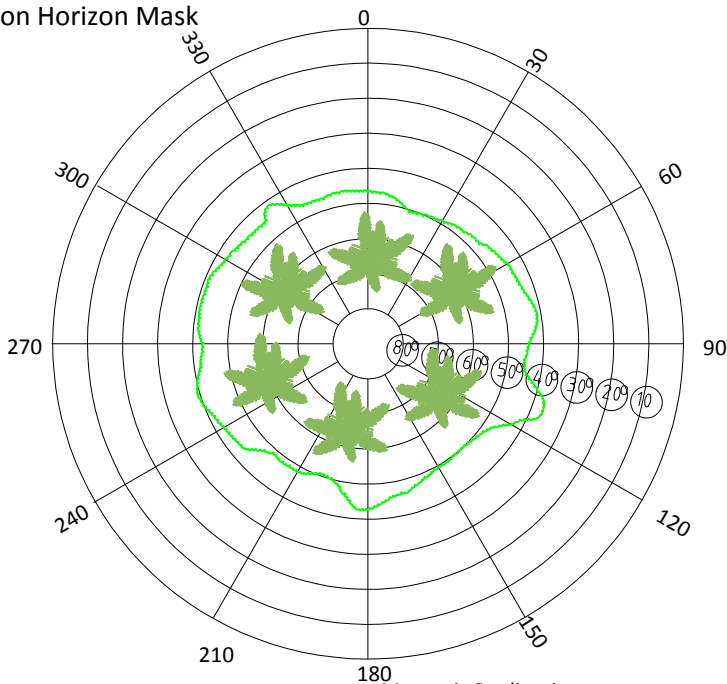
West Height 1.6m / Distance 2m

SITE INFORMATION

Station Number

P	S	M	5	6	2	9
---	---	---	---	---	---	---

Station Horizon Mask

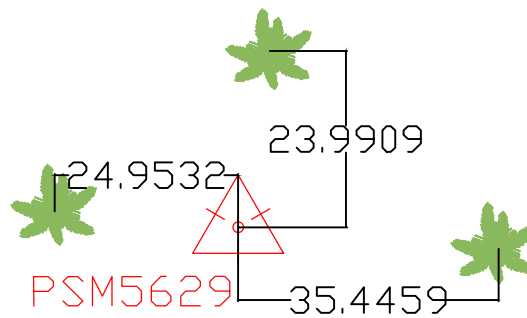
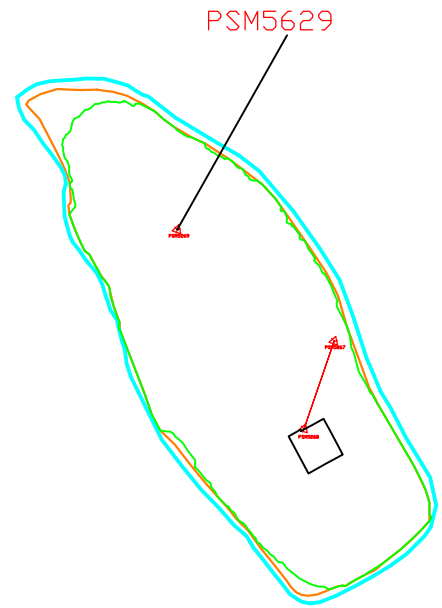


Height above Marker that horizon was mapped from 1.5 m

Magnetic Declination Declination applied to this figure?
 Yes No



Locality



Sketched by: Abulho

Scale:

Not to Scale

Date: 14 FEBRUARY 2015